



# **4TH PACIFIC WEEK OF AGRICULTURE AND FORESTRY (PWAF)**

**‘Transforming Agriculture and Forestry’**

**MORE: REGENERATION | PRODUCTIVITY | RESILIENCE**

**26-30 MAY, 2025, NUKU’ALOFA, TONGA**



Food and Agriculture Organization  
of the United Nations



Pacific  
Community  
Communauté  
du Pacifique

## **PWAF 2025 PROGRAMME**



# CONTENTS

Message from the Tonga  
Minister for Agriculture, Food  
and Forests (MAFF)

2

Daily Programme

3

Location | Maps  
(Nuku'alofa)

4

Side Events Programme

6



# “Malo e lelei and welcome to Tonga!”

We are honoured to host the **4th Pacific Week of Agriculture and Forestry** here in Nuku'alofa. The theme for this week ***Transforming Agriculture and Forestry: more regeneration, more productivity, more resilient*** encapsulates key messages for our Pacific Islands and Territories whereby our land resources are threatened by unsustainable practices and we must continuously develop sustainable climate smart technologies to ensure that they remain healthy, productive, protected, and resilient.

We look forward to the new friendships and partnerships that will be forged in the coming days through information sharing sessions, side events and trade displays.

Tonga proudly invites you to witness our own growth in agriculture and forestry showcased by our local organisations, farmers and communities.

I wish you all the best and enjoy your time with us this week.

Malo 'aupito

A handwritten signature in yellow ink that reads 'Halavatau'.

**Dr. Siosiu Halavatau**

Hon. Minister for Agriculture, Food and Forests  
Tonga







# DAILY PROGRAMME

## DAY 1 | MONDAY 26 MAY, 2025

8.30 - 8.50am	BRIEFING FOR DAY 1 SIDE EVENT ORGANISERS
9.00 - 10.30am	4th PWAf OPENING CEREMONY - TONGA HIGH SCHOOL SPORTS COMPLEX – INDOOR GYMNASIUM
10.30 - 5.00pm	TRADE DISPLAYS - TONGA HIGH SCHOOL SPORTS COMPLEX – INDOOR GYMNASIUM
12:00-1:00pm	FLOATS & PARADE
10.30 - 5.30pm	SIDE EVENTS : TONGA HIGH SCHOOL SPORTS COMPLEX - AUXILIARY BUILDING
5.30 - 5.50pm	DE- BRIEFING WITH DAY 1 SIDE EVENT ORGANISERS
6.00 - 9.00pm	PWAf 2025 WELCOMING FUNCTION - GOVERNMENT OF TONGA (BY INVITATION ONLY)

## DAY 2 | TUESDAY 27 MAY, 2025

8.00 - 5.00pm	TRADE DISPLAYS - TONGA HIGH SCHOOL SPORTS COMPLEX – INDOOR GYMNASIUM
8.00 - 8.20am	BRIEFING FOR DAY 2 SIDE EVENT ORGANISERS
8.30 - 5.30pm	SIDE EVENTS
5.30 - 5.50pm	DE- BRIEFING WITH DAY 2 SIDE EVENT ORGANISERS

## DAY 3 | WEDNESDAY 28 MAY, 2025

8.00 - 5.00pm	TRADE DISPLAYS - TONGA HIGH SCHOOL SPORTS COMPLEX – INDOOR GYMNASIUM
8.00 - 8.20am	BRIEFING FOR DAY 3 SIDE EVENT ORGANISERS
8.30 - 11.30am	SIDE EVENTS
11.30 - 11.50am	DE- BRIEFING WITH DAY 3 SIDE EVENT ORGANISERS
12.30pm - 5.30pm	10th PACIFIC HEADS OF AGRICULTURE AND FORESTRY SERVICES MEETING (CLOSED EVENT) - FA'ONELUA CONFERENCE CENTER
6.00 - 9.00PM	FAO/SPC EVENING FUNCTION, TANOVA HOTEL (BY INVITATION ONLY)

## DAY 4 | THURSDAY 29 MAY, 2025

8.00 - 5.00pm	TRADE DISPLAYS - TONGA HIGH SCHOOL SPORTS COMPLEX – INDOOR GYMNASIUM
8.30 - 5.00pm	10th PACIFIC HEADS OF AGRICULTURE AND FORESTRY SERVICES MEETING (CLOSED EVENT) - FA'ONELUA CONFERENCE CENTER
9.00 am – 2.00pm	MINISTERS FIELD TRIP
	TRADE DISPLAY FINISHES

## DAY 5 | FRIDAY 30 MAY, 2025

9.00 - 5.00pm	4th PACIFIC MINISTERS OF AGRICULTURE AND FORESTRY MEETING (CLOSED EVENT) - FA'ONELUA CONFERENCE CENTER
5.30 - 7.00pm	PWAf 2025 CLOSING FUNCTION - GOVERNMENT OF TONGA AND PHAMA PLUS (BY INVITATION ONLY)



# LOCATION | MAPS

NUKU'ALOFA | TONGATAPU

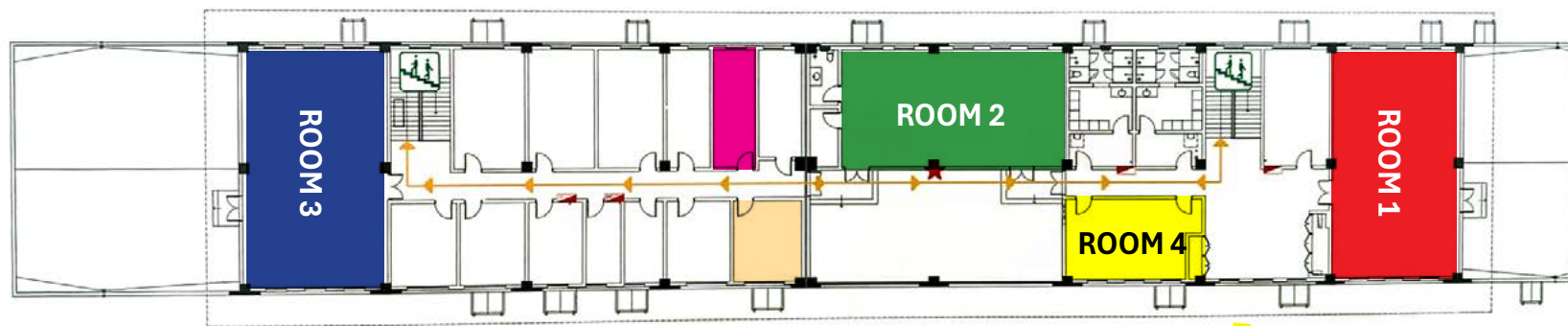


- 1 Tonga High School ~ Sports Complex
- 2 Fa'onelua Convention Center
- 3 Tanoa International Hotel

**NOTE:** All Side Events will be held at the Tonga High School Sports Complex (1). The Heads of Agriculture and Forestry Service Meeting, together with the Pacific Ministers of Agriculture and Forestry Conference, will be held at the Fa'onelua Convention Center (2).



**Side Event Venue** ~ The venue for the all side event is the top floor of the **Tonga High School Sports Complex - Auxiliary Building**, refer to image below together with it's floor plan and the allocated four meeting rooms : Room 1: Kava (red), Room 2 Telea (green), Room 3: Sangone (Blue) and Room 4: Nua (yellow).



Floor Plan



- **Room 1: KAVA** (Banquet) - up to 70 people
- **Room 2: TELEA** (Conference) - up to 70 people
- **Room 3: SANGONE** (Theatre) - up to 70 people
- **Room 4: NUA** (Small Theatre) - up to 30 people
- Secretariat Room
- Media Room



# SIDE EVENTS PROGRAMME

DAY 1 – MONDAY 26 MAY 2025, TONGA HIGH SCHOOL SPORTS COMPLEX - AUXILIARY BUILDING				
Time	Room 1: KAVA	Room 2: TELEA	Room 3: SANGONE	Room 4: NUA
8.30am – 8.50am	BRIEFING FOR DAY 1 SIDE EVENT ORGANISERS IN ROOM 1: KAVA			
10.30am – 12.30pm	<b>1 Sustainable Agriculture Intensification Advancing Productivity, Soil Health, and Resilient Livelihoods</b>  <b>Organisers:</b> Uni of Melbourne & MORDI Tonga Trust  <b>Objectives: -</b> <ol style="list-style-type: none"> <li>Understand key Sustainable Agriculture Intensification (SAI) interventions and their role in improving productivity, soil health, and climate resilience in the Pacific.</li> <li>Share insights from the ACIAR Sustainable Agriculture Intensification project in Tonga and Samoa, highlighting best practices and their impact.</li> <li>3) Engage in collaborative dialogue with partners to identify regional needs and opportunities for expanding SAI across diverse farming systems in the Pacific.</li> </ol> <b>Contact person(s):</b> Viliamu Iese <a href="mailto:viliami.iese@unimelb.edu.au">viliami.iese@unimelb.edu.au</a> Soane Patolo <a href="mailto:soanejr@morditonga.to">soanejr@morditonga.to</a>	<b>2 Monitoring land degradation and deforestation: earth observations supporting countries with reporting for the UNCCD through the GEO-LDN initiative.</b>  <b>Organiser:</b> SPC  <b>Objectives: -</b> <ol style="list-style-type: none"> <li>To support countries in the monitoring and reporting on the UNCCD convention and on SDG 15.2, 15.3.</li> <li>To enhance understanding of the UNCCD and GEO-LDN approaches and provide a forum for information sharing and exchange, on current programmes, discuss emerging issues and challenges and to explore opportunities for regional program on UNCCD and GEO-LDN.</li> <li>To share information about available datasets and mapping tools for continuous mapping and reporting.</li> <li>To support member countries with additional tools for baselines and ongoing monitoring of agricultural land productivity and changes in forest cover.</li> </ol> <b>Contact person(s)</b> Andiswa Mlisa <a href="mailto:andiswam@spc.int">andiswam@spc.int</a>	<b>3 Accelerating Rural Women Economic Empowerment in four Pacific countries through Agriculture</b>  <b>Organisers:</b> IFAD, WFP, UN WOMEN, FAO  <b>Objectives: -</b> <ol style="list-style-type: none"> <li>To showcase progress and learnings in Fiji, Tonga, Kiribati and Solomon Islands after two years of implementing a five-year initiative to address economic empowerment of rural women</li> <li>Four UN agencies will share their perspectives on improving economic outlook for rural Pacific women.</li> </ol> <b>Contact person(s)</b> Luke Koroisave <a href="mailto:L.koroisave@ifad.org">L.koroisave@ifad.org</a> Saidamon Bodamaev <a href="mailto:saidamon.bodamaev@wfp.org">saidamon.bodamaev@wfp.org</a>	<b>4 Pacific Peanuts</b>  <b>Organisers:</b> VARTC Vanuatu, Central Queensland Uni.  <b>Objectives: -</b> <ol style="list-style-type: none"> <li>Share the results of current peanut research from Vanuatu to the wider Pacific community</li> <li>Promote regional networking peanut of RDE and businesses from Pacific Island countries</li> <li>Enhance understanding of peanut challenges and opportunities in Pacific Island countries</li> <li>Lay the foundation for a Pacific Peanut Forum (PPF), in the “Pacific Regional Research Symposium”, aligned with the biennial event - Pacific Week of Agriculture and Forestry (PWAf).</li> </ol> <b>Contact person(s)</b> A/Prof Surya P Hattarai <a href="mailto:s.bhattarai@cqu.edu.au">s.bhattarai@cqu.edu.au</a> Floriane Lawac <a href="mailto:Floriane.lawac@gmail.com">Floriane.lawac@gmail.com</a>
12.30pm – 1.30pm	LUNCH BREAK			



1.30pm – 3.30pm	<b>5 SDG Farm-Based Indicators and their Role in Transforming Pacific Agriculture</b>  <b>Organisers:</b> FAO and Tonga National University <b>Objectives: -</b> I. Presenting the results of SDG farm-based indicators - 2.3.1, 2.3.2, 2.4.1, and 5.a.1 - compiled for the first time from seven Pacific Island countries, providing insights into small-scale food producers' productivity and income, as well as agricultural sustainability, and gender equality in the Pacific context II. Demonstrating the relevance of these SDG farm-based indicators to PWAF's core themes of regeneration, productivity, and resilience, emphasizing their role in driving sustainable agricultural and forestry systems. III. Facilitating dialogue among stakeholders to explore how these SDG farm-based indicators can guide policymaking, program design, and resource allocation for a more sustainable and equitable agricultural future in the Pacific  <b>Contact person(s)</b> Guy Oswald Obama <a href="mailto:guy.obama@fao.org">guy.obama@fao.org</a> Dr. Losa Moata'ane <a href="mailto:losa.moataane@otago.ac.nz">losa.moataane@otago.ac.nz</a>	<b>6 Partnering with Farmer Organisations for Greater Impact</b>  <b>Organisers:</b> Pacific Farmer Organisations, IFAD, DFAT, MORDI Tonga Trust, Nishi Trading, Growers Federation of Tonga, PNG Women in Agriculture Devt, ANAPROFIKO – Timor Leste, Teitei Taveuni – Fiji, University of Notre Dame <b>Objectives: -</b> I. To highlight the impacts of agricultural development investments through farmer organisations in the Pacific Islands. II. To discuss the comparative advantage of partnering with farmer organisations to capitalise on indigenous knowledge, community-led development, farmer-led research and women's empowerment for agricultural development in the Pacific Islands.  <b>Contact person(s)</b> Kyle Stice <a href="mailto:manager@pacificfarmers.com">manager@pacificfarmers.com</a> Soane Patolo <a href="mailto:soanejr@morditonga.to">soanejr@morditonga.to</a>	<b>7 Promoting Safe Provision of Food and Other Humanitarian Aid in a Region Prone to Natural Disasters and Climate Extremes</b>  <b>Organisers:</b> PPPO, SPC, DAFF Australia, MPI NZ <b>Objectives: -</b> I. Raise awareness among stakeholders about the challenges faced in food and humanitarian aid distribution in the context of natural disasters versus preventing unwanted pests and diseases from intruding the Pacific region. II. Facilitate the sharing of best practices and innovative solutions for maintaining biosecurity standards after natural disasters, including case studies from successful interventions across the region.  <b>Contact person(s)</b> Riten Chand Gosai <a href="mailto:riteng@spc.int">riteng@spc.int</a> Lauren Madden <a href="mailto:lauren.madden@aff.gov.au">lauren.madden@aff.gov.au</a>	<b>8 Farm Data &amp; Agricultural Sustainability</b>  <b>Organisers:</b> National Farmers' Federation (Australia), CSIRO <b>Objectives: -</b> I. Foster good relations and partnerships between Australia & our Pacific neighbours, II. Share insights from ongoing projects and highlight value for Pacific nations, III. Highlight opportunities to increase & maintain market access, IV. Satisfy ESG reporting demands from trade & finance sectors V. Solutions for sustainability data stewardship  <b>Contact person(s)</b> Warwick Ragg <a href="mailto:wragg@nff.org.au">wragg@nff.org.au</a> Laura Kostanski <a href="mailto:laura.kostanski@csiro.au">laura.kostanski@csiro.au</a>
3.30pm – 5.30pm	<b>9 Innovative Soil Solution for Pacific Agriculture: Enhancing Crop</b>  <b>Organisers:</b> (Omya NZ. MTD) <b>Objectives: -</b> Demonstrate how Omya's soil conditioning products (Calciprill, Magprill, and Sulfoprill) can improve soil health and structure in Pacific Island environments, enhancing crop nutrition and resilience to climate change stressors.  <b>Contact person(s):</b> Tala Aliifaalogo <a href="mailto:tala.saxonalifaalogo@omya.com">tala.saxonalifaalogo@omya.com</a>			<b>10 Regenerating Pacific Agriculture and Forestry: The Role of Genebanks in Enhancing Crop and Tree Agro-Biodiversity'</b>  <b>Organisers:</b> SPC <b>Objectives: -</b> I. To raise awareness on the critical role of crop and tree agro biodiversity (i.e. PGRFA and FGR) in sustaining Pacific agriculture and forestry, advocate for a unified regional conservation strategy II. Highlight CePaCT's essential role as a regional genebank in preserving crop and tree biodiversity for food security, climate resilience, and sustainable development across the Pacific  <b>Contact person(s)</b> Logotonu Waqainabete <a href="mailto:logotonuw@spc.int">logotonuw@spc.int</a> Jalesi Mateboto <a href="mailto:jalesim@spc.int">jalesim@spc.int</a>
5.30pm – 5.50pm	<b>DEBRIEFING FOR DAY 1 SIDE EVENT ORGANISERS IN ROOM 1: KAVA</b>			
6.00pm – 8.00pm				<b>10. Dinner function (by invitation only)</b>

DAY 2 – TUESDAY 27 MAY 2025, TONGA HIGH SCHOOL SPORTS COMPLEX - AUXILIARY BUILDING

Time	Room 1: KAVA	Room 2: TELEA	Room 3: SANGONE	Room 4: NUA
7.00am – 8.30am		<b>11 Celebrating Women’s Leadership in Agriculture (Breakfast event) .</b> <b>Organiser:</b> Australia DAFF <b>Objectives: -</b> I. To recognise the vital role of Pacific women in agriculture. II. To promote the advancement of rural women in the Pacific region. III. To contribute to the region’s growth and development of women working in agriculture. <b>Contact person(s):</b> Mariana Leite <a href="mailto:mariana.leite@aff.gov.au">mariana.leite@aff.gov.au</a> Ivani Torales <a href="mailto:ivani.torales@aff.gov.au">ivani.torales@aff.gov.au</a> <i>“Due to the limited capacity of the venue the catering options will be restricted”</i>		
8.00am – 8.20am	BRIEFING FOR DAY 2 SIDE EVENT ORGANISERS IN ROOM 1: KAVA			
8.30am – 10.30am	<b>12 Regional Collaboration for Soil Health and Sustainability: Advancing Strategies and Action through the Pacific Soils Partnership</b> <b>Organisers:</b> ACIAR, FAO, MWLR, SPC <b>Objectives: -</b> To strengthen regional collaboration and knowledge sharing for soil health across the Pacific by promoting evidence-based action plans and advancing the work of the Pacific Soils Partnership through multi-stakeholder engagement, including the finalisation of the PSP Terms of Reference and Governance Structure <b>Contact person(s):</b> Binesh Prasad <a href="mailto:bineshp@spc.int">bineshp@spc.int</a> Rohit Lal <a href="mailto:rohitl@spc.int">rohitl@spc.int</a>	<b>13 Restoring Forests and Landscapes for a Resilient Pacific</b> <b>Organisers:</b> Tonga MAFF, Fiji Min. of Forestry, FAO, SPC <b>Objectives: -</b> I. To enhance understanding of the FLR approaches and provide a forum for information sharing and exchange, on current programmes, discuss emerging issues and challenges and to explore opportunities for regional program on FLR and Invasive species management II. To promote the significance of nature-based solutions as a sustainable and effective way to restore and protect forests and landscapes <b>Contact person(s):</b> Jalesi Mateboto <a href="mailto:Jalesim@spc.int">Jalesim@spc.int</a> Heimuli Likiafu <a href="mailto:hlikiafu@yahoo.com">hlikiafu@yahoo.com</a>	<b>14 A Resilient Pacific Food System - it’s everyone’s business!</b> <b>Organisers:</b> SPC, CSIRO, University of Wollongong, SPTO, and PIFON <b>Objectives: -</b> To advocate & showcase a systems approach to food systems and how this is important to improve nutritional & health outcomes, support economic growth, protect the environment, and address social inequalities. <b>Contact person(s):</b> Alisi Tuqa <a href="mailto:alisit@spc.int">alisit@spc.int</a> Nicolas Gouletquer <a href="mailto:nicolas.gouletquer@csiro.au">nicolas.gouletquer@csiro.au</a>	<b>15 Becoming an Agribusiness Employer of Choice for People with Disabilities</b> <b>Organiser:</b> PHAMA Plus <b>Objectives: -</b> I. Highlight the business case for the employment of people with disabilities, with a focus on agri-businesses. II. Provide practical guidance to agribusinesses on simple, affordable steps they can take in the short term to improve the accessibility of their workplace III. Provide guidance on longer-term, more substantive measures to create truly inclusive workplaces that require more significant investment. <b>Contact person(s):</b> Nicola Dowsing <a href="mailto:n.dowsing@phamaplus.com.au">n.dowsing@phamaplus.com.au</a> Melissa Collins <a href="mailto:melissa.collins@dt-global.com">melissa.collins@dt-global.com</a>



10.30am – 12.30pm	Slide Event 12 Continues	Slide Event 13 Continues	Slide Event 14 Continues	<b>16 Plant Health Clinics in the Pacific: the roles of the region's universities</b> <b>Organisers:</b> Tonga MAFF, Uni of Queensland, Fiji National Uni. <b>Objectives:</b> - I. To update delegates with the regional Plant Health Clinic program that has been developed and implemented under ACIAR project HORT/2016/185. II. Focus on how the universities have strengthened their plant protection curricula, introduced PHCs into teaching programs and worked together to develop an intensive course for PHC doctors that ran for the first time in 2024. III. Discuss next iteration of the course (to run at FNU in July 2025) and the sustainability benefits of involving universities in the professional training of extension staff <b>Contact person(s):</b> Mike Furlong <a href="mailto:m.furlong@uq.edu.au">m.furlong@uq.edu.au</a> Mereia Fong <a href="mailto:Mereia.fong@fnu.ac.fj">Mereia.fong@fnu.ac.fj</a>
12.30pm – 1.30pm	LUNCH BREAK			
1.30pm – 3.30pm	<b>17 . Pacific Kava Festival</b> <b>Organisers:</b> National Kava Komiti-Tonga, MDF, PHAMA Plus, PIFS <b>Objectives:</b> - The Pacific Kava Festival is part of the vocal actions toward the implementation of regional strategic priorities A platform to network and connect Pacific stakeholders where they can discuss on various aspects of kava from farm management to modern-day extracted products and derivatives throughout its value chain as potential products for market access/expansion <b>Contact person(s):</b> Losalini Mafile'o <a href="mailto:losamafi98@gmail.com">losamafi98@gmail.com</a> Fe'iloakitau Tevi <a href="mailto:feiloakitau.kaho.tevi@gmail.com">feiloakitau.kaho.tevi@gmail.com</a>	<b>18 Strengthening Climate Resilience in Pacific Agriculture: Leveraging Climate Tools for Informed Decision-Making</b> <b>Organisers:</b> Vanuatu Meteorology and Geo-Hazards Dept, APEC Climate Centre <b>Objectives:</b> - A collaborative session featuring insights from key stakeholders involved in the Van-KIRAP project, focusing on practical tools, lessons learned, and their application to strengthen resilience in Pacific agriculture. <b>Contact Person(s):</b> Jong Ahn Chun <a href="mailto:jachun@apcc21.org">jachun@apcc21.org</a> Sunny Seuseu <a href="mailto:sunnys@sprep.org">sunnys@sprep.org</a>	<b>19 Pacific vision for Adapted Crops and Soils (PACS)</b> <b>Organisers:</b> SPC, DFAT, CSIRO, Aust. BOM <b>Objectives:</b> - Launch of the PACS initiative and showcase one of the selected opportunity crops to demonstrate the types of activities and anticipated outcomes that PACS will deliver. The goal of the PACS initiative is to build a resilient food system grounded in diverse, nutritious and climate-adapted crops grown in healthy soils and landscapes <b>Contact person(s):</b> Clement Gandet <a href="mailto:clementg@spc.int">clementg@spc.int</a> Sharon Alder <a href="mailto:Sharon.alder@csiro.au">Sharon.alder@csiro.au</a>	<b>20 Sustainable Forestry – A Pacific Vision for the Future</b> <b>Organisers:</b> SPC, QDAF, ACIAR <b>Objectives:</b> - I. to showcase the current innovations with utilising senile coconut stems into a high-value engineered wood products (EWP) and provide the platform for exchange and information sharing on Wood and Future Engineered Wood Products. II. to encourage networks, exchanges and learnings through the Pacific Network of Forestry Professionals <b>Contact person(s):</b> Jalesi Mateboto <a href="mailto:jalesim@spc.int">jalesim@spc.int</a> Robbie McGavin <a href="mailto:robbie.mcgavin@daf.qld.gov.au">robbie.mcgavin@daf.qld.gov.au</a> Sefanaia Tawake <a href="mailto:sefanaia@spc.int">sefanaia@spc.int</a>



3.30pm – 5.30pm	Slide Event 17 Continues	<b>21 Regional Research Agenda: A Collaborative Framework to Prioritizing Research for Impact</b> <b>Organisers:</b> SPC, ACIAR <b>Objectives: -</b> I. Confirm the researchable priorities gathered from member countries. II. PHOAFS to reach an agreement on the top researchable priorities for collaboration. III. Partners (financial and technical) target to collaborate within the RRA framework to support member countries in research design, implementation and resource mobilisation <b>Contact person(s):</b> Stephanie Ramona O'Connor Sulifoa <a href="mailto:stephanieo@spc.int">stephanieo@spc.int</a>	Slide Event 19 Continues	Slide Event 20 Continues
5.30pm – 5.50pm	DEBRIEFING FOR DAY 2 SIDE EVENT ORGANISERS IN ROOM 1: KAVA			
6.00pm – 8.00pm		21. Dinner function (by invitation only)		



DAY 3 – WEDNESDAY 28 MAY 2025, TONGA HIGH SCHOOL SPORTS COMPLEX - AUXILIARY BUILDING

Time	Room 1: KAVA	Room 2: TELEA	Room 3: SANGONE	Room 4: NUA
8.00am – 8.20am	BRIEFING FOR DAY 2 SIDE EVENT ORGANISERS IN ROOM 1: KAVA			
8.30am – 11.30am	<p><b>22 From Farm to Policy: Partnering to Regenerate Pacific Food Environments for Resilience, Productivity, and Health</b></p> <p><b>Organisers:</b> Uni. of Otago, World Vegetable Center, Dikoda, Consumer Council of Fiji</p> <p><b>Objectives: -</b></p> <ol style="list-style-type: none"> <li>Highlight how improving food environments goes hand in hand with strengthening the resilience and equity of food systems, while also supporting productive and regenerative local food production.</li> <li>Share the rationale for, and key learnings from PIC More Veg's implementation in Fiji.</li> <li>Facilitate solution-oriented discussions on adapting PIC More Veg to country-specific contexts.</li> <li>Build partnerships and define actionable steps to improve healthy food access across the region.</li> </ol> <p><b>Contact person(s)</b></p> <p>Ee Von Goh <a href="mailto:eevon.goh@worldveg.org">eevon.goh@worldveg.org</a> Miranda Miroso <a href="mailto:miranda.miroso@otago.ac.nz">miranda.miroso@otago.ac.nz</a></p>	<p><b>23 One Health - Avian Influenza focused on surveillance and preparedness</b></p> <p><b>Organisers:</b> (SPC, NZ MPI, Aust DAFF, PHOVAPS, WOA and ACDP)</p> <p><b>Objectives: -</b></p> <ol style="list-style-type: none"> <li>To present the status of the PICTs' capacities in animal disease surveillance.</li> <li>To support the increased awareness of a One Health approach focusing on avian influenza.</li> <li>Share scientific data, experience and information to help prevent, diagnose and control avian influenza.</li> <li>To promote networks between participants coming from different disciplines.</li> <li>Discuss strategies and plans to strengthen surveillance and preparedness against avian influenza outbreaks.</li> </ol> <p><b>Contact person(s)</b></p> <p>Elenoa Salele <a href="mailto:elenoas@spc.int">elenoas@spc.int</a> Eric Rafai <a href="mailto:ericr@spc.int">ericr@spc.int</a> Clement Gandet <a href="mailto:clementg@spc.int">clementg@spc.int</a></p>	<p><b>24 Tonga Fresh Produce Mini Trade Forum: Transforming Agriculture through enhanced trade, underpinned by market insight and NZ biosecurity compliance.</b></p> <p><b>Organisers:</b> Tonga MAFF, PTI NZ &amp; NZMPI</p> <p><b>Objectives: -</b></p> <ol style="list-style-type: none"> <li>Market insight: Communicate the need for market insights as the key to unlocking potential for fresh produce exports to New Zealand.</li> <li>Biosecurity import requirements: Discuss key challenges and opportunities for meeting New Zealand import requirements.</li> <li>Supply chain: Show importance of stakeholders performing their roles on the supply chain and highlight the value of consistent coordination to improve trade.</li> <li>Export Ready: Explain the difference between Export Ready and Export Capable. Encourage participants to take the test.</li> <li>Networking: Provide a platform for stakeholders to connect with each other throughout the event and especially through the booth's one-on-one interactions.</li> </ol> <p><b>Contact person(s)</b></p> <p>Siutoni Tupou <a href="mailto:siutonit@gmail.com">siutonit@gmail.com</a> Glynis Miller <a href="mailto:glynis.miller@pacifictradeinvest.com">glynis.miller@pacifictradeinvest.com</a> Rebecca Hislop <a href="mailto:rebecca.hislop@mpi.govt.nz">rebecca.hislop@mpi.govt.nz</a></p>	<p><b>25 China-Aid Agro-Tech Project</b></p> <p><b>Organisers:</b> Tonga MAFF, China Aid</p> <p><b>Objectives: -</b></p> <ol style="list-style-type: none"> <li>To present the status of China Agro-Tech Project in Tonga.</li> <li>To showcase new initiatives that have been implemented in Tonga</li> </ol> <p><b>Contact person(s)</b></p> <p>Charles Kato <a href="mailto:kto_cjw@yahoo.com">kto_cjw@yahoo.com</a></p>
11.30am – 11.50am	DEBRIEFING FOR DAY 3 SIDE EVENT ORGANISERS IN ROOM 1: KAVA			



## DAY 1 - MONDAY 26 MAY 2025

### 26 Community led climate resilient food systems, Empower Rural Women in Food Security

**Time 11:00am**

**Organiser:** Live and Learn

**Objectives: -**

- I. To share knowledge, insights and facilitate knowledge exchange regarding community led climate resilient adaptation for sustainable food systems
- II. To showcase the results of our home garden in the Hi-hifo District in Tongatapu which contribute to the Regional Priorities in improving Food Security. The event will demonstrate the main goal of this program, which is to improve the health of the people, limit NCD and minimize the import of overseas food and import substitution

**Contact person(s)**

Yan Lai [yan.lai@livelearn.org](mailto:yan.lai@livelearn.org)

Alani Afu [alaniafu@livelearn.org](mailto:alaniafu@livelearn.org)

Graham Mala'efo'ou [graham.malaefoou@livelearn.org](mailto:graham.malaefoou@livelearn.org)

### 27 Piloting solar-powered desalination for agriculture in the Pacific

**Time: 2:00pm**

**Organiser:** Nishi Trading and Australian National Uni.

**Objectives: -**

To provide a hands-on experience and overview of novel desalination technologies being applied to agricultural context in Tonga

**Contact person(s)**

Minoru Nishi [md@nishitrading.to](mailto:md@nishitrading.to)

Ewelina Przybyszewski [ewelina.przybyszewski@anu.edu.au](mailto:ewelina.przybyszewski@anu.edu.au)

## FIELD TRIPS



## DAY 2 - TUESDAY 27 MAY 2025

### 28 Agroecology from field to plate

**Organisers:** Gov of French Polynesia, SPC-POETCom

**Time: 10:00am**

**Objectives: -**

- I. To demonstrate and raise awareness of how agroecology and organic agriculture inspired from nature-based solutions, drawing on both research-based evidence and traditional knowledge, can enhance the sustainability of our food systems. Beyond raising awareness, the aim is to foster regional cooperation dynamics to support the agroecological and food transition in the Pacific, addressing community needs and strengthening the resilience of the agricultural sector to the impacts of climate change.
- II. To highlight local products that are well-suited to our context but too often overlooked.

**Contact person(s)**

Clement Gandet [clementg@spc.int](mailto:clementg@spc.int)

Gilles Parzy [biostrategies@edenparc.bio](mailto:biostrategies@edenparc.bio)

### 29 Field Trip (Open)

**Organisers:** Tonga MAFF

**Time: 2:00pm**

**Objectives: -**

- I. Farm Visit (Piggery Biogas Vegetable Farm), Traditional Yam harvesting, Tree Planting Demonstration Farm.
- II. Traditional Tapa Making Women Group, NISHI Juicing Facility, MORDI Projects

**Field Trip site:-**

- Tree Planting Plot at Utulau
- Free Range Farm at Utulau
- Vanilla Farm at Vaini
- Tupou College Toloa
- Tapa Making (Folaha & Lapaha).

**Contact person(s)**

Elisaia Ika [elisaia.ika@gmail.com](mailto:elisaia.ika@gmail.com)

Kalati Malo Hafo [kalatimau@gmail.com](mailto:kalatimau@gmail.com)

**EMERGENCY CONTACT :** Tonga Ministry of Agriculture, Food and Forests (MAFF) Staff:

Lesieli Tu'itupou - **7217482** | Siosi'ana Toluta'u - **7232498**

**Others:**

Police - **922** | Fire & Emergency - **999** | Health/Ambulance – **933**